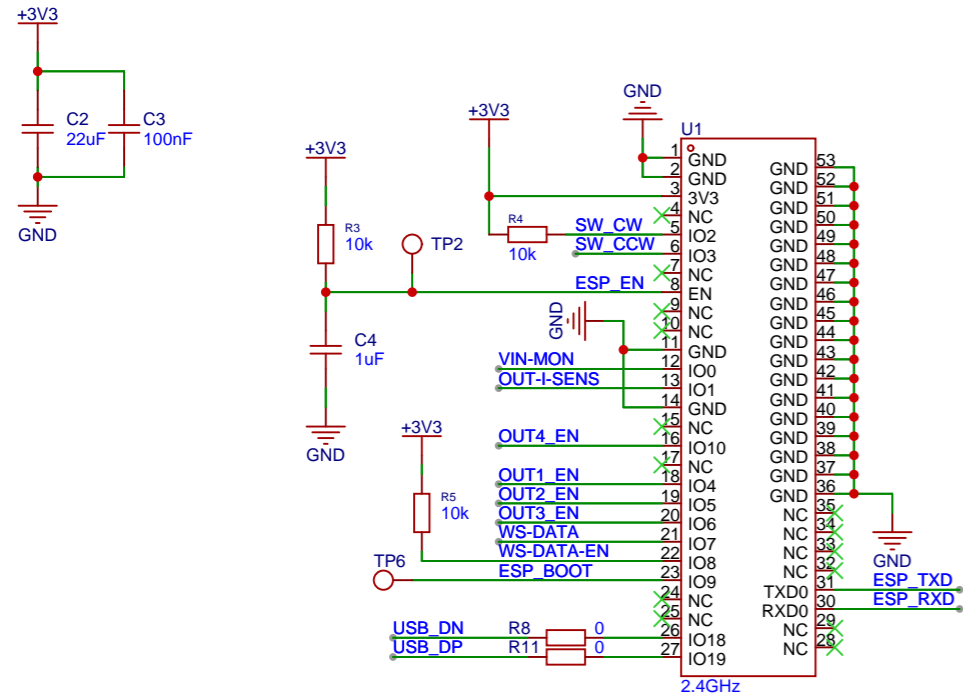
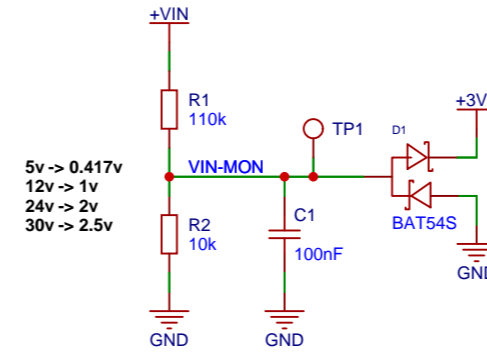


ESP32-C3 MCU

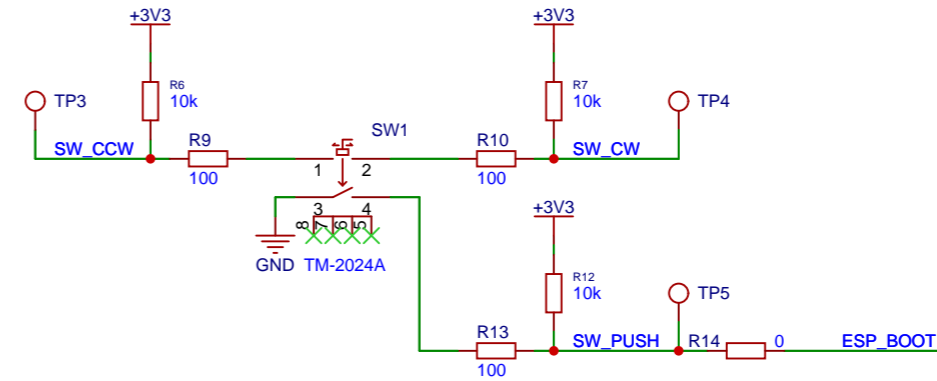
ESP32-C3 ADC Attenuations:
 0 dB = 0 - 750 mV
 2.5 dB = 0 - 1050 mV
 6 dB = 0 - 1300 mV
 11 dB = 0 - 2500 mV



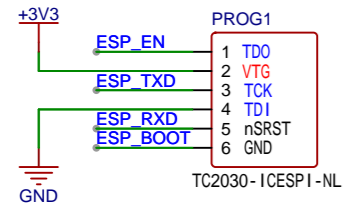
V-IN Monitoring



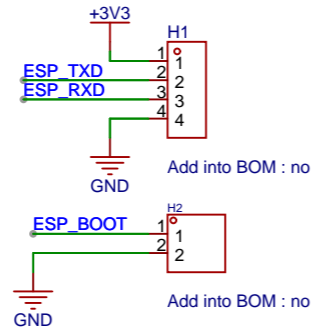
Rotary Wheel Switch



Tag-Connect TC2030



Programming Headers



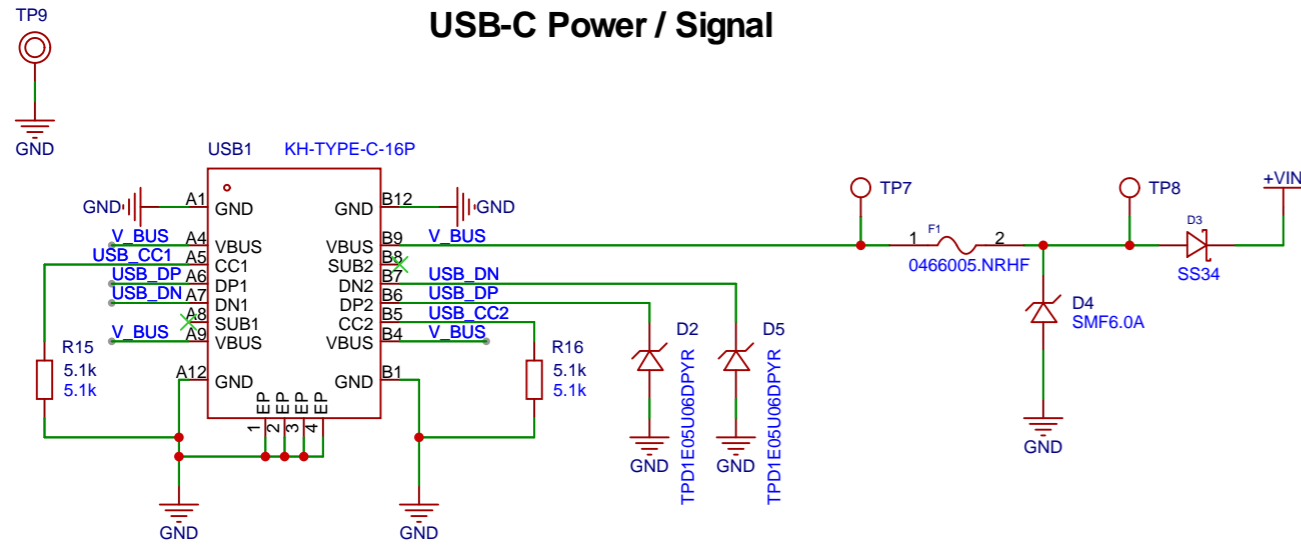
2) JLC04161H-7628 Stackup

Layer	Material Type	Thickness	
Layer	Copper	0.035mm	
Prepreg	7628*1	0.2104mm	
inner Layer	Copper	0.0152mm	1.1mm (with copper core)
Core>	Core	1.065mm	
inner Layer	Copper	0.0152mm	
Prepreg	7628*1	0.2104mm	
Layer	Copper	0.035mm	

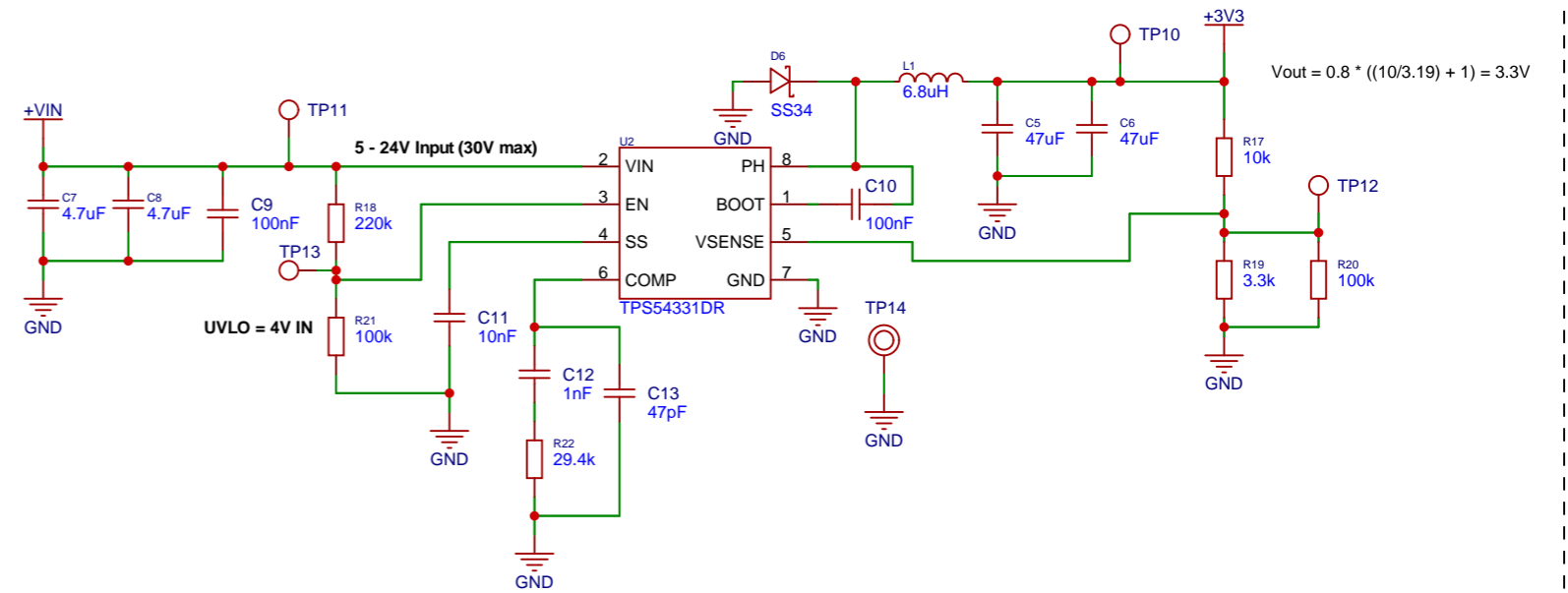
Schematic	LED_Controller_v1.0	Update Date	2024-08-15		
		Create Date	2024-01-07		
Page	MCU	Part Number			
Drawn	nhtomkins	SmartHome_LED_Controller			
Reviewed					
		VER	SIZE	PAGE	1 OF 3
EasyEDA		V1.0	A4	EasyEDA.com	

Power Input

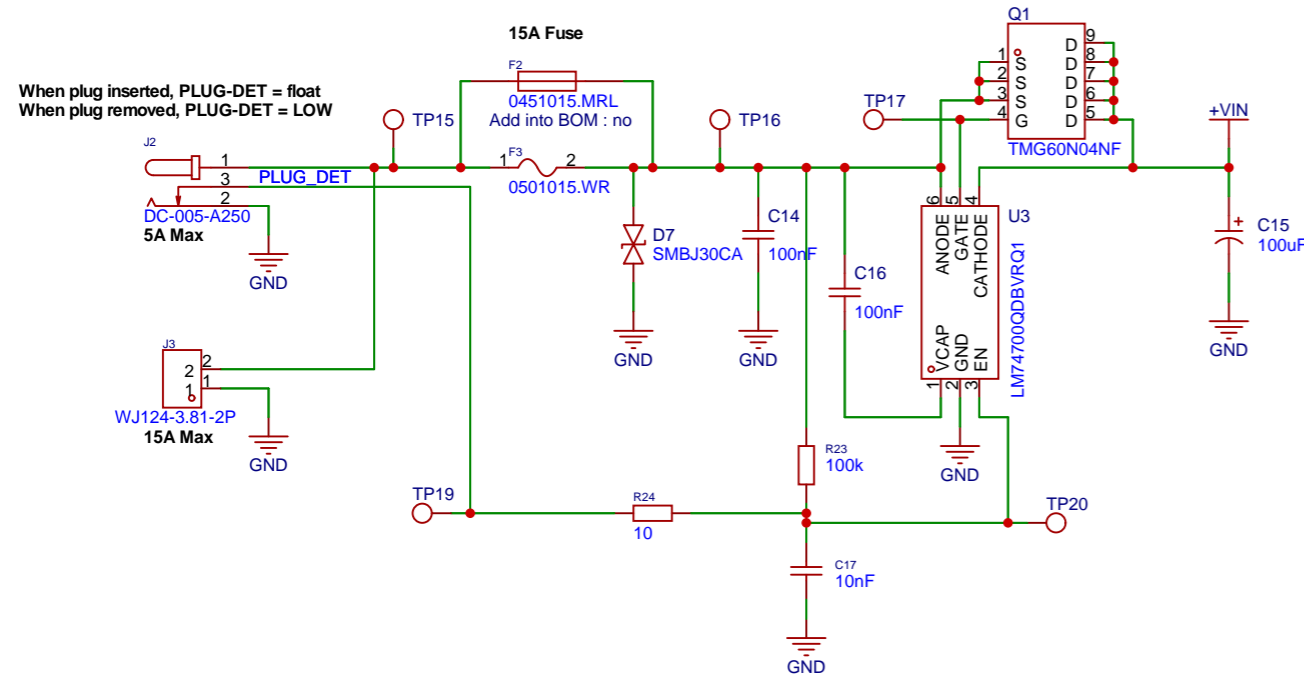
USB-C Power / Signal



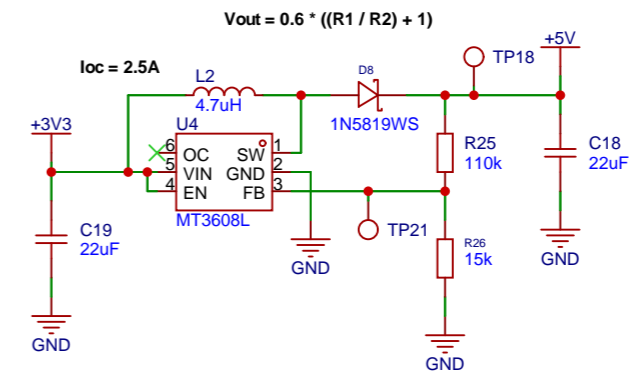
3.3V Buck Converter



5 - 24V DC Input + Reverse Polarity Protection



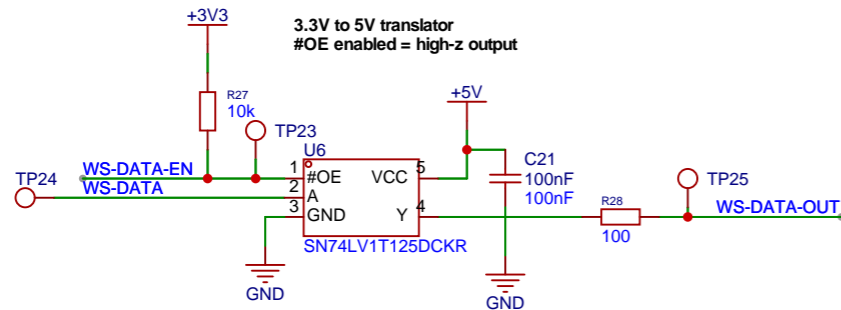
5V Boost Converter



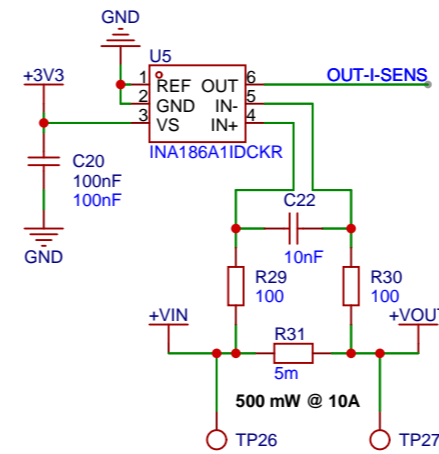
Schematic	LED_Controller_v1.0	Update Date	2024-07-28		
		Create Date	2024-01-07		
Page	INPUT	Part Number			
Drawn	nhtomkins	SmartHome_LED_Controller			
Reviewed					
		VER	SIZE	PAGE	2 OF 3
EasyEDA		V1.0	A4	EasyEDA.com	

Output Control

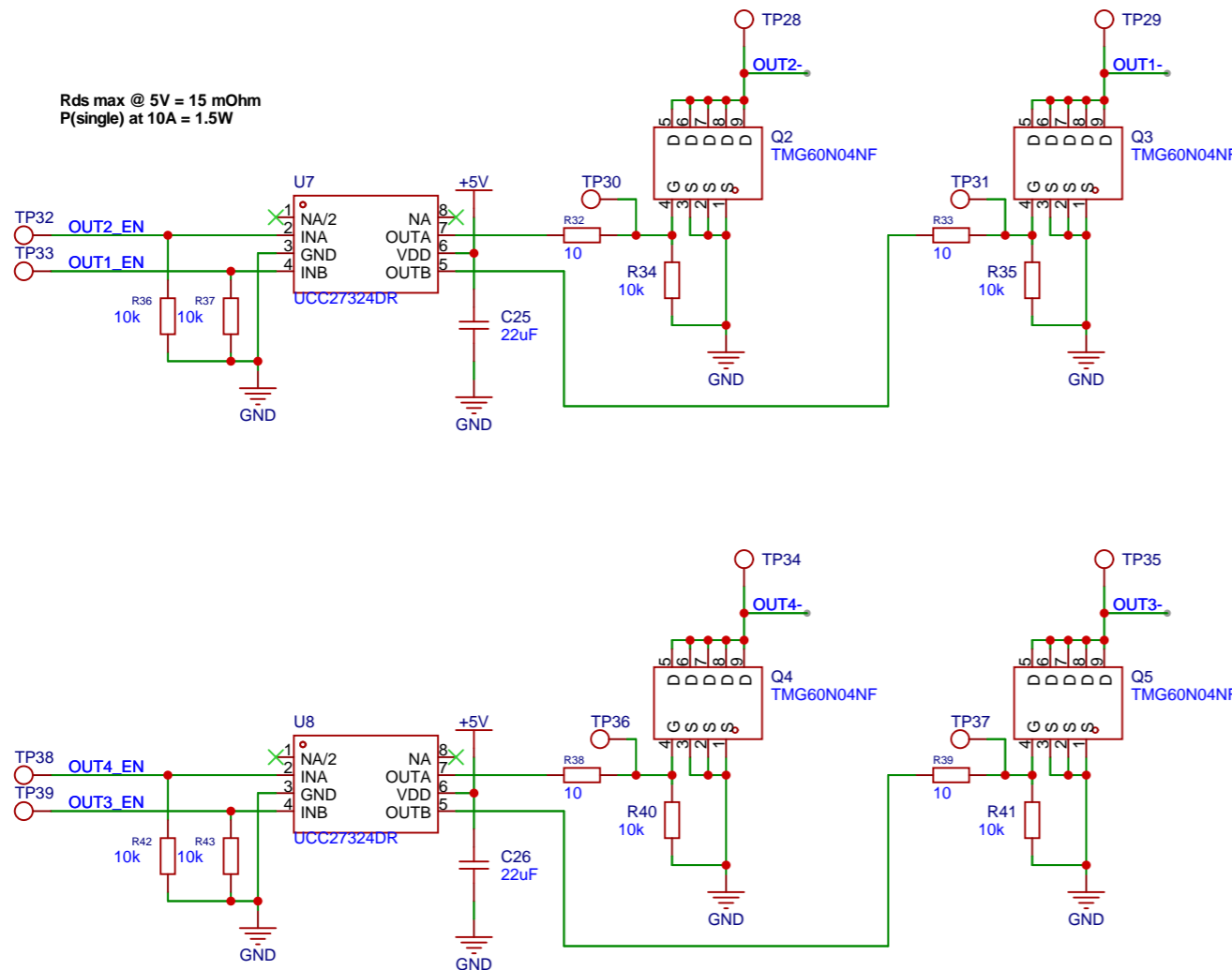
3.3V -> 5V Logic Level Translator



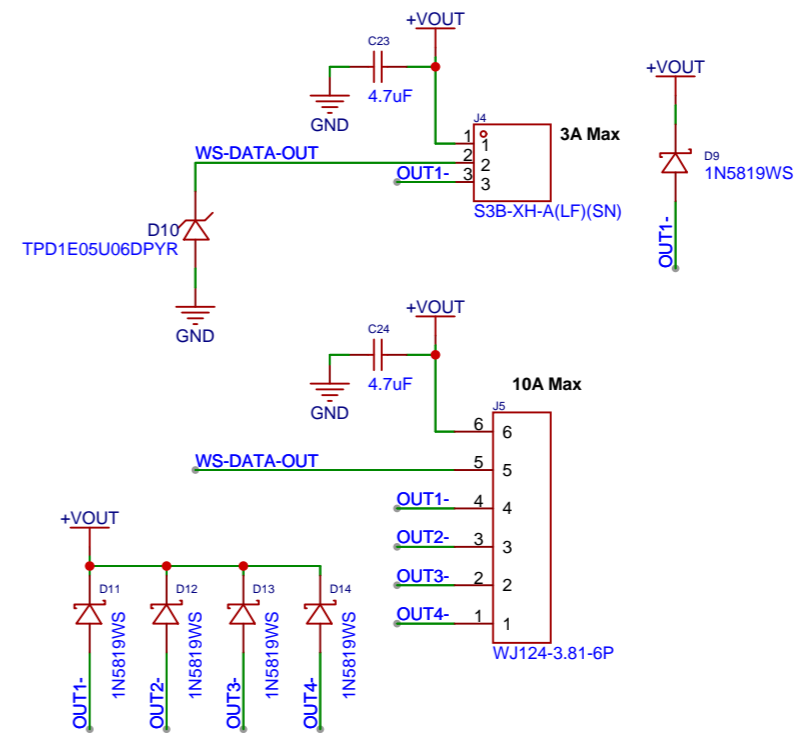
Current Monitoring



Low-Side Power MOSFETs



Output Connectors



Schematic	LED_Controller_v1.0		Update Date	2024-07-28	
Page	OUTPUT		Create Date	2024-01-07	
Drawn	nhtomkins		Part Number		
Reviewed			SmartHome_LED_Controller		
	VER	SIZE	PAGE	3	OF 3
	V1.0	A4	EasyEDA.com		